

Glen Kreikemeier Estate Auction



Tractors, Combine, Farm Equipment, Trailers and More!

Saturday, June 15, 2024

10:00 a.m.

Onsite: 284 Co Rd. F, Dodge, NE

Sale Directions: From Hwy 91 & Co. Rd 3. Go South 2 3/4 miles, turn West on F for about a 1/2 mile. Property sits on the North Side of the Road. Watch For Signs.

Concessions available by "The Lunchbox"

This auction is live and online thru equipment facts.

Tractors & Payloader

Case International Magnum 305, SN#Z7RZ04645,
Rear 480/80R50, Fronts 380/80R38, Pro 700 Monitor,
4 Hydraulics, tach replaced—showing 2400 hours
New Holland 8870, 10172 hours, Front 380/85R28,
4 Hydraulics, Front 3 pt. Hitch
New Holland 8870, shows 5017 hours
CAT 924GZ Payloader, showing 5893.5 hours,
SN#C0054
International Fork Lift, showing 1488.9 hours



Farm Equipment

Case International Early Riser 1240 Planter, YBS028665,
16R30 with inner plants, Bulk Fill, Liquid Fertilizer w/
Valves, meters, PTO Drive
The Weed Zapper, SN#044 w/Boom
Big Dog Soil Mover
Unverferth 572 Grain Cart, SN#B1686179,
Tarp, 30.5L-32



Brent 572 Grain Cart, SN#, Tarp
Walinga Grain Vac SN#2W9VC20211G001836
2003 Walinga 6614D Grain Vac,
SN#2W9VC22233G001546



Walinga Model 510 Grain Vac Bean Tender System with Wagon
Schaben Pop Up Nurse Tank w/2 Tanks,
Model P-316-DCBT, SN#300946
Case 496 21 1/2 ft Disc, 21" Front Blades,
20" Rear Blades, JAG0164058
HyGrade 1400RS 14 ft. Pull Type Tilt Angle Blade,
N#JM1208-755



International 5400 Drill with Grass Seed,
SN#JAG0447527, 15 ft



90 ft. 3 pt. Shop Built Sprayer Boom
Patriot Pivot Closer, SN#31540

Wilrich 1500 Stock Chopper, SN442988

Westendorf, Grapple, Bale Spear and Bucket

Portable Pen with Tarp

Killsboro Gravity Wagon with Westendorf Gear

Yetter All Steer Nurse Tank M02321

International 360 6 Bottom Plow

(2) Augers with no flighting

Front End 3pt. for a Tractor

Landpride 6 ft. RCF2072 Shredder, SN#706592

Scarifier

Box Scraper

Grapple Fork

International Rotary Hoe

Drive Over Pit – Set up for Vacuum

Westendorf 570 Loader

Woods Groundbreaker BH90-X 3 pt Backhoe,
SN#1328161



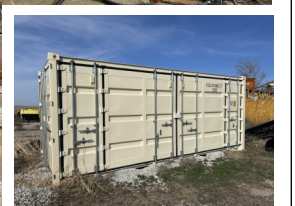
Pickup, Trucks & Trailers

Sterling Truck with Meyer 9524 Dry Manure Spreader
2002 Ford F150, Lariat Pickup
1998 Freightliner Vin#1FUJDZYB5XLB32094, Eaton
Fuller Transmission,
shows 039314.1 miles – not verified
Merrit MVT Grain Trailer, Electric Tarp
Dorsey Trailer, plumbed with 2 2500 gal. Poly Tanks,
Set up for a Sprayer Trailer
1980 Donahue Gooseneck Trailer, Model GS30016E,
Vin#02598
S&W Welding Galvanized Trailer w/Wood Floor
H&H Speed Loader EX Flatbed Trailer, Winch,
Driver over Fenders
Kentucky Van Trailer, Vin#1KKVE4822KL085922



Miscellaneous

3000 gal. Black Poly Tank
(8) Yellow Storage Tanks, 3000 gal.
Storage Container with Rear and Side Doors
3 pt Rear Mount 400 gal. Tank
Pickup Stock Rack
Fuel Tanks
Fuel Tank on Wheels w/Pump
Ford Front Weights
3 pt. Shop Built Fork Lift
Yale Pallet Mover
Ag Heater, Saddle Tanks
Gandy 65 Series Spreader
Sprayer Fertilizer Wide Drops



Auctioneer Comments: We have the privilege of selling this well taken care of equipment. Not many smalls so be on time. Can't make the sale, bid online thru Equipment Facts. Go to our website: olsonpearson.com for more information, consigner information, pictures and videos.

www.olsonpearson.com

Terms & Conditions: All announcements day of sale take precedence over written material. No warranties expressed or implied. Cash or good check. Sale Day settlement with buyers.



"The Key to your auction success"

Olson & Pearson Auctions & Realty

114 N Main, P.O. Box 25, Hooper, NE 68031

Office 1-800-820-3934 or 402-654-3370

Sale Day Phone:

Ed Olson - 402-380-2811

Carl Pearson Sales Representative – 402-380-2365

Brad Petersen, Sales Representative – 402-720-2294

Mike Nissen, Sales Representative—402-380-2772